

Icons of Innovation:

Selections from the

Rothschild Petersen Patent Model Museum

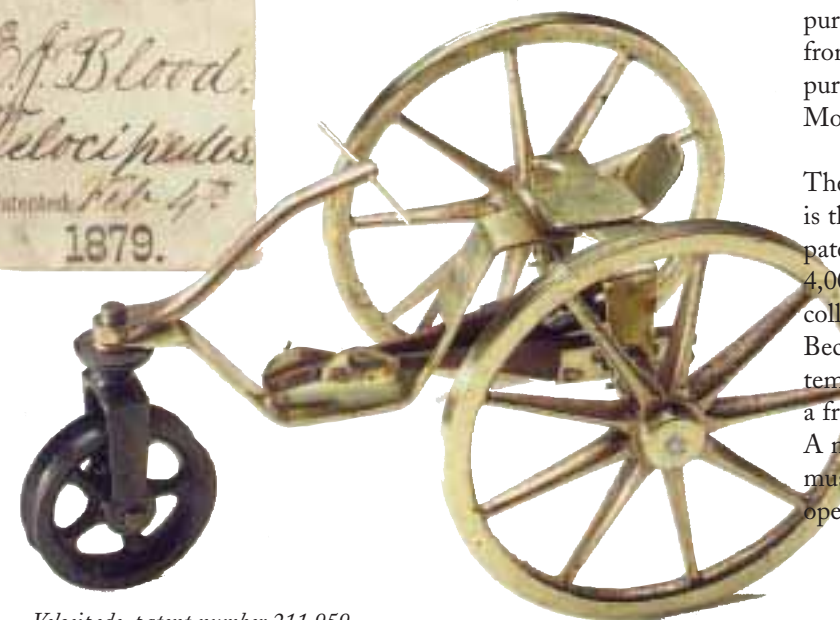


Federal Reserve Bank of Boston
October 8, 2003 – March 26, 2004

Icons of Innovation: Selections from the
Rothschild Petersen Patent Model Museum



Tile Facing and Squaring Machine, patent number 228,929



Velocipede, patent number 211,959

The Patent Act of 1790 required that anyone applying to the U.S. Patent Office submit a working model of the invention. Patent models were to be no more than 12 inches square, with paperwork and diagrams explaining the item's purpose, construction, and operation. Over 200,000 models were submitted during the next 90 years, but after two fires and a growing lack of space, the model requirement was abolished in 1880.

Congress sent some models to the Smithsonian Institution, but the bulk were sold at auction in 1925. The winning bidder was Sir Henry Wellcome, founder of what is now the Glaxo-Wellcome pharmaceutical company. After Wellcome's death, the collection was broken up, and thousands of models were sold off to a succession of private owners.

During the 1990s, Alan Rothschild acquired the remainder of the original collection from Cliff Petersen, and he established the Rothschild Petersen Patent Model Museum in 1998. Mr. Rothschild has added to the museum with purchases of smaller patent model collections from around the United States, including the purchase of all 82 models in the Pollan Patent Model Museum in Fort Smith, Arkansas.

The Rothschild Petersen Patent Model Museum is the largest privately owned collection of U.S. patent models in the world. Containing nearly 4,000 patent models and related documents, the collection spans America's Industrial Revolution. Because of space limitations at the museum's temporary location in Cazenovia, New York, only a fraction of the models are currently on display. A new and expanded permanent home for the museum in central New York is expected to open to the public in the near future.



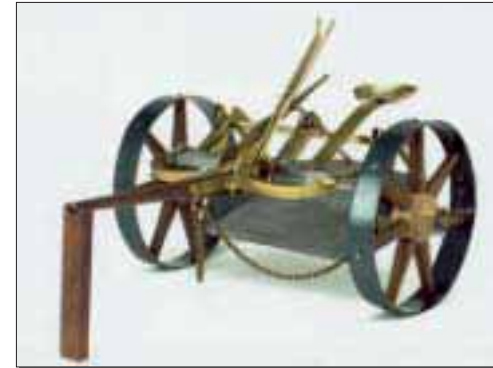
Lathe for Turning Shafting, patent number 58,605

Checklist of Patent Models

1. **Clothes Pounders** (no. 143,901)
2. **Emery-Grinding Machine** (no. 161,951)
3. **Machine for Forming Pottery Ware** (no. 185,096)
4. **Parlor Stove** (no. 208,659)
5. **Paper Tube Machine** (no. 162,236)
6. **School Desk** (no. 101,118)
7. **Clothes Wringers** (no. 122,527)
8. **Tile Facing and Squaring Machine** (no. 228,929)
9. **Machine for Casting Confectionery** (no. 169,935)
10. **Portfolio for Stationery Articles** (no. 111,717)
11. **Scholar's Companion** (no. 215,399)
12. **Velocipede** (no. 211,959)
13. **Interest Calculator** (no. 271,949)
14. **Apparatus for Carbonizing Air for Illuminating Purposes** (no. 44,560)
15. **Furnace for Roasting Ores** (no. 207,890)
16. **Screw Cutting Machine** (no. 15,932)
17. **Sad Iron** (no. 207,766)
18. **Cane Seat** (no. 80,300)
19. **Washing Machine** (no. 106,137)
20. **Floor Scrubber** (no. 206,212)
21. **Door Mat** (no. 211,348)
22. **Hinge** (no. 5,058)
23. **Bell Telegraph Annunciator** (no. 6,202)



Coal Box, patent number 152,595



Earth Scraper, patent number 204,149

24. **Blackboard Rubber** (no. 36,589)
25. **Clothes Drier** (no. 103,133)
26. **Steam Boiler** (no. 108,604)
27. **Means for Connecting Gear Wheels with their Shafts** (no. 159,221)
28. **Heating Stove** (no. 164,899)
29. **Spring Bed Bottom** (no. 189,104)
30. **Refrigerator** (no. 54,980)
31. **Turning Lathe** (no. 58,605)
32. **Telegraph Apparatus** (no. 76,748)
33. **Sectional Steam Boiler** (no. 80,543)
34. **Reed Organ** (no. 139,666)
35. **Coal Boxes** (no. 152,595)
36. **Ironing Boards** (no. 181,034)
37. **Atmospheric and Vacuum Egg Beater** (no. 214,936)
38. **Combined Lunch Boxes and Shopping Bags** (no. 144,385)
39. **Crayon and Eraser Holder for Blackboards** (no. 328,177)
40. **Blackboard Rubber** (no. 182,932)
41. **Book and Slate** (no. 21,984)
42. **Dividers** (no. 257,413)
43. **Devices for Teaching Drawing** (no. 139,237)
44. **Shawl Strap Handle** (no. 239,540)
45. **Skate** (no. 127,193)
46. **Stencil Plate** (no. 296,327)
47. **Book Rack** (no. 252,053)
48. **Inkstand** (no. 17,373)
49. **Melodeon** (no. 16,296)

50. **Addressing Attachment for Printing Machines** (no. 220,977)
51. **Portable Refrigerator** (no. 206,128)
52. **Washing Machine** (no. 88,816)
53. **Pasting Mechanism for Paper Folding Machines** (no. 212,872)
54. **Brick Machines** (no. 89,680)
55. **Shoes** (no. 212,794)
56. **Valve for Water Closets** (no. 231,967)
57. **Churn** (no. 295,460)
58. **Tile Machine** (no. 77,925)
59. **Fluting Apparatus** (no. 128,168)
60. **Illuminator and Incense Burners** (no. 117,281)
61. **Governor Steam Engines** (no. 99,751)
62. **Swing** (no. 109,165)
63. **Pressure Gauges** (no. 101,636)
64. **Indicators for Pressure Gauges** (no. 201,637)
65. **Earth Scrapers** (no. 204,149)



Governor for Steam Engines, patent number 99,751



Swings, patent number 109,165